



**PROUDLY SERVING THE NATIONAL
CHURCH GOODS ASSOCIATION SINCE 1945.**

Custom Manufacturing
In Bronze, Aluminum & Wrought Iron

Candle and Electronic
Votive Light Stands

Wrought Iron Appointments

Custom Crosses

Stations of The Cross

DESIGNS BY GRECO

CANDLE VOTIVE LIGHT STANDS

Hand Crafted Ecclesiastical Furnishings

A | VOTIVE STAND COMBINATION SCROLL DESIGN

Item	Hour	Day	W	Price
19X2016	20-15	16-7	28"	\$2,030
19X2824	28-15	24-7	42"	\$2,450
19X4032	36-15	32-7	56"	\$2,890

B | C | PYRAMID TYPE STAND

Item	Lights	W	H	D	Price
19XP40	40	28"	40"	13.5"	\$1,650
19XP80	80	56"	40"	13.5"	\$1,990

Please Specify Wrought Iron or Tubular base.

D

Item	Lights	W	H	D	Price
19XP21	21	28"	40"	13.5"	\$1,650
19XP42	42	56"	40"	13.5"	\$1,990

Please Specify Wrought Iron or Tubular base.

E | VOTIVE STAND

Item	Lights	W	H	D	Price
19X90	40	36"	40"	16"	\$1,760

F | Large Prong for globes

G | Small Prong for glass & inserts

H | 8 Leaf Husk for glass & inserts

I | 4 Leaf Husk for glass 3,5,7 day & inserts

J | Small Husk for votive glass 10, 15, 24 hr.

K | Small Cup for votive glass 10, 15, 24 hr.





A | NEW! 19X60

28"W x 40"H x 17"D

Shown with 19X36R Corner Pieces
and optional modern Chi-Rho symbol.
Sold without glass.

\$1,690

B | NEW! 19X36R CORNER PIECE

17" Radius x 40"H x 17"D

Shown with optional modern
Chi-Rho Symbol.
Sold without glass.

\$1,360 (Each)

22X18 MODERN CHI-RHO SYMBOL

7.5"W x 16"H

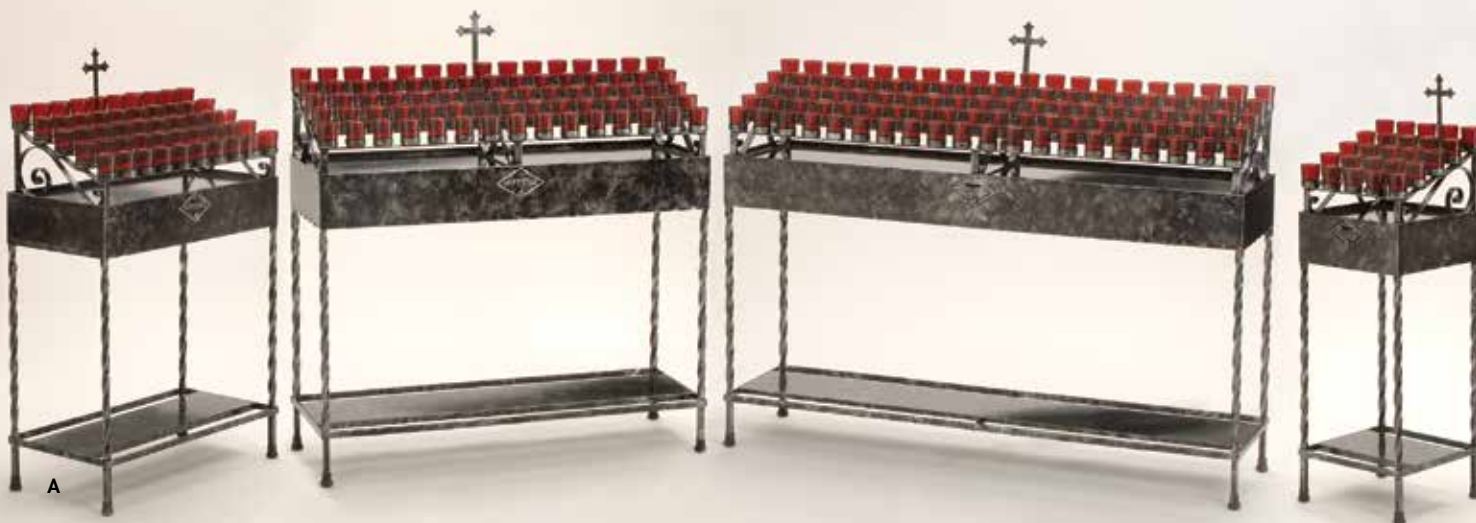
\$365 (Each)

CANDLE VOTIVE LIGHT STANDS

Hand Crafted Ecclesiastical Furnishings

A | VOTIVE LIGHT STAND WROUGHT IRON

Item	Lights	W	H	D	Price
19X25	25	14"	38"	13.5"	\$1,320
19X50	50	28"	38"	13.5"	\$1,600
19X75	75	42"	38"	13.5"	\$1,930
19X100	100	56"	38"	13.5"	\$2,250



A



B



C



D

B | 19X01 VOTIVE LIGHT STAND

Wrought Iron. Back row has 6 large lights and four rows of 10 small lights.

28"W x 38"H x 13.5"D	\$1,660
42"W: 9 large lights	\$2,090
60 small lights	
56"W: 12 large lights	\$2,280
80 small lights	

C | 19X37 VOTIVE LIGHT STAND

Wrought Iron. 7 Day Lights. 24 lights regular glass/20 lights for globes.

28"W x 38"H x 13.5"D	\$1,750
42"W: 36 large lights	\$2,130
56"W: 48 large lights	\$2,550

D | 19X92 VOTIVE STAND

24 Large Lights. With Utility Shelf.

32"W x 38"H x 13.5"D \$2,010

CANDLE VOTIVE LIGHT STANDS

Hand Crafted Ecclesiastical Furnishings



A | LEAF TYPE STAND — 28"W x 17"D

Item	Lights	H	Leaf	Prong
19x05	5	35"	\$1,140	\$1,190
19x10	10	35"	\$1,170	\$1,210
19x15	15	38"	\$1,240	\$1,390

B | 19X49 OPEN TOP STAND

Tubular base with pan
40"W x 40"H x 14"D \$1,760

C | 19X82 CHI-RHO DESIGN

Holds 42 small & 14 large lights with pan
40"W x 40"H x 17"D \$2,570

D | 19X56R RADIUS VOTIVE STAND

34"W x 38"H x 17"D \$2,900

19X70 | 8-LIGHT SCONCE

16"W x 26"H x 4"D \$990 each

E | 19X35R RADIUS VOTIVE STAND

34"W x 40"H x 17"D \$2,900

Also Available: Casters \$310

OFFERING BOXES

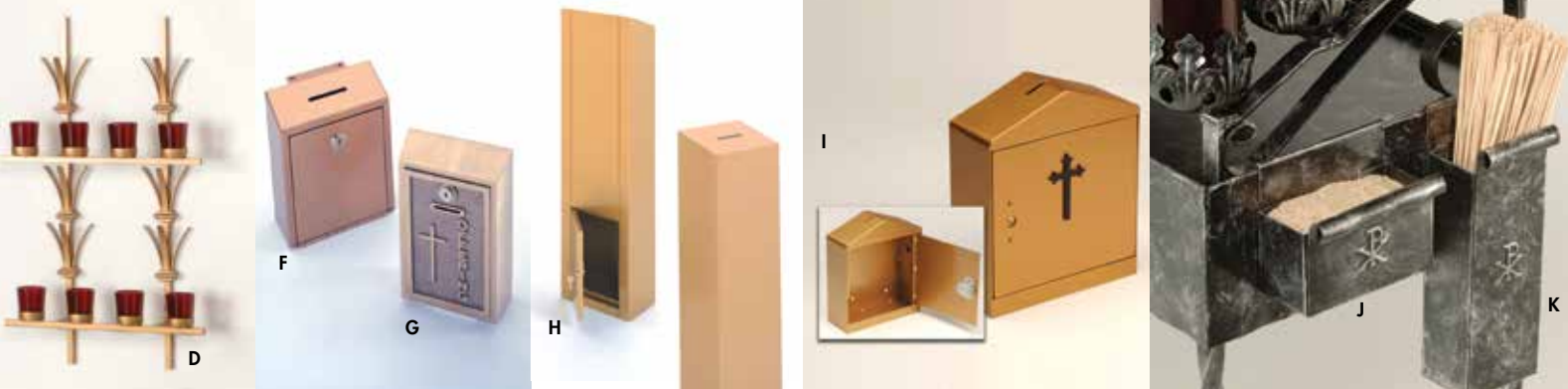
Item	W	H	D	Stand	Wall
F 14X08	6"	9"	3.75"	\$295	\$295
G 14X01A	6"	7"	2.5"	\$750	\$750
G 14X01B	6"	7"	2.5"	\$1,270	\$1,270
H 14X10	10"	36"	6"	\$880	\$880
I 14X12	10.25"	12.5"	4"	N/A	\$870

J | 19X03 SANDBOX (SAND INCLUDED)

5"W x 3.5"H x 2"D \$210

K | 19X02 TAPER BOX (TAPERS INCLUDED)

3"W x 9.5"H x 2.25"D \$210



Glasses shown on this page are not included with stands.

WROUGHT IRON APPOINTMENTS

Hand Crafted Ecclesiastical Furnishings

A | 5X75 FLOOR STAND & ADVENT WREATH
24"W x 54"H \$1,870

B | 7X40 FLOOR SANCTUARY LAMP
49"H \$1,010

C | 6X30 CANDLESTICK
42"H x 1.5" Socket \$760

D | 5X50 FLOOR CANDELABRA
57"H x 7/8" Socket \$1,340

E | 2X130 PASCAL
44"H x 2.5" Socket \$1,100

F | 4X10 STANDING PROCESSIONAL CROSS
78"H \$2,270

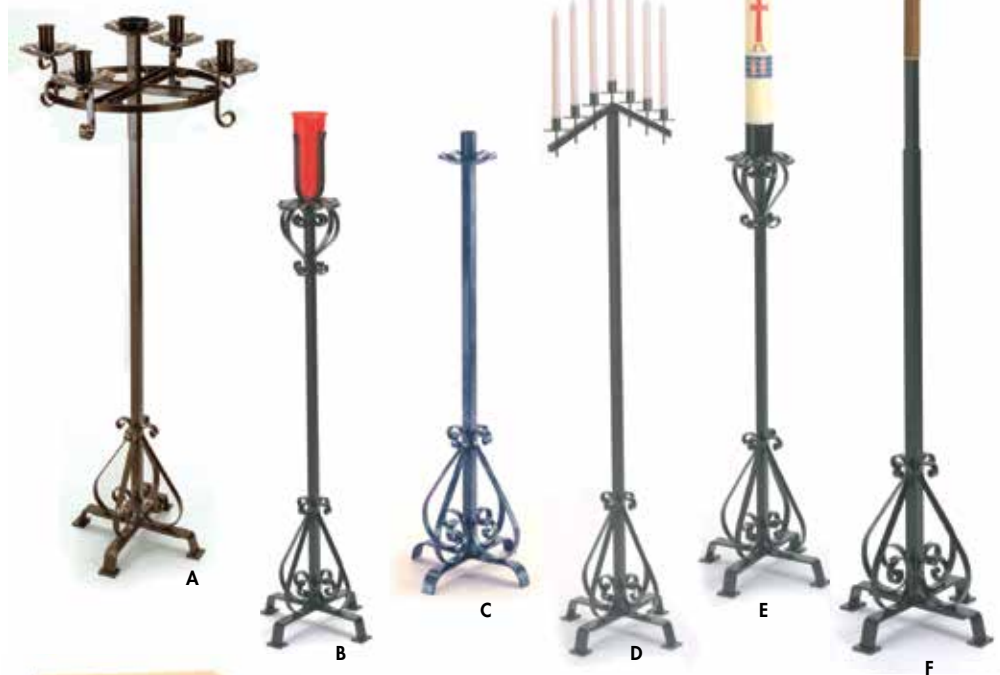
G | 13X70 LECTERN
Solid oak top, wrought iron base
20"W x 45"H x 23"D \$2,980

H | 21X30 SINGLE PRIE DIEU
Padded kneeler and armrest,
wrought iron base
22"W x 34"H x 20"D \$1,450
21X32 DOUBLE PRIE DIEU (Not Pictured)
40"W x 34"H x 20"D \$2,490

I | 25X30 CREDENCE TABLE
Solid oak top, wrought iron base
28"W x 30"H x 17"D \$1,650

J | 7X115W HANGING SANCTUARY LAMP
16" x 3" x 12" back wall plate
13" x 14" lamp, 22" chain \$815

K | 7X130W WALL SANCTUARY LAMP
16" x 3" x 12" \$585



PREMIER CANDLE STANDS

Hand Crafted

Ecclesiastical Furnishings



A

A | 19X110 VOTIVE LIGHT STAND

72"W x 46"H x 29"D \$14,150
110 Lights
15" Square Opening for Statue
Shown with 48" Statue (not included)

B | CUSTOM CANDLE STAND

Item	Lights	W	H	D	Price
19X51	50	43"	39"	20"	\$5,480
19X51A	Combination Top (3 rows=30 large/2 rows=30 small)				\$5,990

C | CUSTOM CANDLE STAND

Item	Lights	W	H	D	Price
19X94	24	39"	43"	20"	\$3,250

D | 8X15 TENEBRAE 15 LIGHT CANDELABRA

7/8"H Candle Sockets
41"W x 75"H \$3,900



D



B



C

BRONZE

GOLD

BLACK &
SILVER
BRUSHED

ANTIQUE

BLACK

BLACK &
GOLD
BRUSHED

BLACK &
SILVER
SPECKLE

COPPER
REPOUSSE

SILVER
REPOUSSE

FINISHES

OAK CABINET CANDLE STANDS

Hand Crafted Ecclesiastical Furnishings

A | 19X784CAB

49"H x 95"W x 38"D | 84 Candles
16" square area for statue \$17,200

B | 19X740CAB

40"H x 43"W x 20"D
40 Candles \$6,790

C | 19X750CAB

43"H x 43"W x 23"D
50 Candles \$7,330

D | 19X7120CAB

43"H x 107"W x 24"D
120 Candles \$16,800

E | 19X7104CAB

43"H x 107"W x 24"D | 104 Candle
16" square area for statue \$16,800

F | 19X736CAB

49"H x 54"W x 28"D
36 Candles \$7,600

G | 19X40CAB

39"H x 31"W x 16"D
40 Votives \$6,000

Solid Brass Crosses are sold separately
in sets of 5 for \$775.00 per set.



A



B



C



D



E



F



G

OAK TABLE CANDLE STANDS

Hand Crafted Ecclesiastical Furnishings



A



B



C



D



E



F



G

A | 19X784TB

49"H x 95"W x 38"D | 84 Candles
16" square area for statue \$14,170

B | 19X40TB

39"H x 31"W x 16"D
40 Votives \$6,790

C | 19X7120TB

45"H x 107"W x 24"D
120 Candles \$14,210

D | 19X750TB

43"H x 43"W x 23"D
50 Candles \$6,990

E | 19X740TB

40"H x 43"W x 20"D
40 Candles \$6,790

F | 19X736TB

49"H x 55"W x 29"D
36 Candles \$6,990

G | 19X7104TB

43"H x 107"W x 24"D | 104 Candles
16" square area for statue \$14,210

Glasses and statues shown on this page are not included with stands.
Shown in honey oak finish. At your request, devotional Votive Stands can be
designed and engineered to fit any area in your church.

STATIONS

Hand Crafted Ecclesiastical Furnishings

A | 20X00 ALL METAL STATION

Full figures. Cast in bronze or aluminum.
Suitable for interior or exterior.

Approx. 28" high.

Bronze \$39,990

Aluminum \$24,250

B | 20X06 METAL STATION

11" figures. Cast in bronze or aluminum.
Overall size approx. 7" x 12". Background
additional upon request of material.

Bronze \$12,416

Aluminum \$9,660

C | 20X16 PLAQUE STATION

Cast in bronze or aluminum.

Can be wood mounted. Approx. 9" x 10"

Bronze \$15,750

Aluminum \$10,800

D | 20X16 15TH STATION

Cast in bronze or aluminum.

Can be wood mounted. Approx. 9" x 10"

Bronze \$1,233

Aluminum \$825



C

A

B

D

15TH STATION

BRONZE APPOINTMENTS

Hand Crafted Ecclesiastical Furnishings



A | 6X85FP PROCESSIONAL CANDLESTICK
Removable at Mid Point Base 12"
46"H to Bobeche, 1.5" Socket \$2,975

B | 6X80F CANDLESTICKS
Base 12", 49"H to Bobeche
1.5" Socket \$2,750

C | 5X80F FLOOR CANDELABRA
Base 12", 56"H x 19"W
7/8" Socket \$3,135

D | 2X12 LOW PROFILE PASCHAL CANDLESTICK
Base 12", 28"H to Bobeche
3" Socket \$2,825

E | 7X80F FLOOR SANCTUARY LAMP
Base 12", 44"H to Bobeche \$3,280

F | 16X90 FLOOR CENSOR STAND
53"H, Base 10" \$2,125

G | 4X175F PROCESSIONAL CROSS
Removable at Mid Point
Overall Height 93" \$3,400

H | 7X180W SANCTUARY LAMP
Back Plate 21" x 3.5"
Projection 11" \$2,780

I | 10X70 MISSAL STAND ADJUSTABLE TOP
15"W x 12"D \$2,075

J | 6X80A ALTAR CANDLESTICKS
Base 7.5", 18"H to Bobeche, 1.5" Socket
Other Sizes Available \$2,250

K | 5X80A ALTAR CANDELABRA
Base 7.5" H 14.5" to Bobeche,
7/8" Socket \$2,250

L | 4X45A ALTAR CROSS W/CORPUS
Base 7.5", 38"H \$1,960



H



L



I



J



K



740 SERIES

Item	Lights	W	H	D	Price
A. 19XE740W	40	41"	48"	17"	\$6,660
A. 19XEL740W	40	41"	48"	17"	\$7,990

Item	Lights	W	H	D	Price
B. 19XE740T	40	40"	48"	17"	\$6,500
B. 19XEL740T	40	40"	48"	17"	\$7,880

D | TUBULAR BASE WITH CROSS INSERT

Item	Lights	W	H	D	Price
19XE540T	40	40"	48"	17"	\$6,830
19XEL540T	40	40"	48"	17"	\$8,060

E |

Item	Lights	W	H	D	Price
19XE401	40	31"	43"	16"	\$9,300
19XEL401	40	31"	43"	16"	\$10,400

F |

Item	Lights	W	H	D	Price
19XE7401	40	43"	48"	20"	\$9,380
19XEL7401	40	43"	48"	20"	\$10,750

CORNER SERIES

Item	Lights	W	H	D	Price
G. 19XE736C	36	50"	57"	25"	\$6,130
G. 19XEL736C	36	50"	57"	25"	\$8,980

Item	Lights	W	H	D	Price
H. 19XE49C	49	46"	49"	23"	\$7,830
H. 19XEL49C	49	46"	49"	23"	\$9,470

C ROMAN INSERT	\$590 additional
G GOTHIC INSERT	\$590 additional
H CHI-RHO INSERT	\$590 additional

ELECTRIC & ELECTRONIC VOTIVE LIGHT STANDS

Hand Crafted Ecclesiastical Furnishings



A
Wrought Iron Base



B



C



D



E



F



G



H

ELECTRIC & ELECTRONIC VOTIVE LIGHT STANDS

Hand Crafted Ecclesiastical Furnishings

A



B



C



D
Free Standing
Floor Mount

Top View



A. Aluminum
B. Solid Bronze

E



F



G



H



A | THREE ROWS SMALL LIGHTS ONE ROW LARGE

Tubular base

Item	Lights	W	H	D	Price
19XE30T	37	28"	47"	13"	\$6,500
19XEL30T	37	28"	47"	13"	\$7,860

40 SERIES

Item	Lights	W	H	D	Price
B. 19XE40T	40	28"	43"	13"	\$6,500
B. 19XEL40T	40	28"	43"	13"	\$7,880
C. 19XE40W	40	28"	43"	13"	\$6,660
C. 19XEL40W	40	28"	43"	13"	\$7,990

OFFERING BOXES

Item	W	H	D	Stand	Wall
D. 14X10	10"	36"	6"	\$880	Floor Mount
E. 14X08	6"	9"	3.75"	\$295	\$295
F. 14X01A	6"	7"	2.5"	\$750	\$750
F. 14X01B	6"	7"	2.5"	\$1,270	\$1,270

G | 19XE212 6 DAY GLASS

Gold Finish, 9.5"H

\$170

H | 19XE215 24 HR GLASS

Gold Finish, 4.5"H

\$145

I | ELECTRIC | ELECTRONIC

Opening for statue base is 17" x 17"
Statue not included

Item	Lights	W	H	D	Price
19XE784	84	88"	57"	36"	\$13,750
19XEL784	84	88"	57"	36"	\$17,250

I | CANDLE STAND

Item	Lights	W	H	D	Price
19X784	84	88"	57"	36"	\$8,790

I



(E) denotes electric, (EL) denotes electronic (5 day, 8 hour, or 2 hour timers available).
All components meet national electric codes and UL safety requirements.
The flicker flame candle bulb is used to simulate candlelight, eliminating open flames.

OAK CABINET ELECTRONIC STANDS

Hand Crafted Ecclesiastical Furnishings

A | 19XE784CAB \$23,265

A | 19XEL784CAB \$29,400

57"H x 95"W x 38"D | 84 Lights
16" square area for statue

B | 19XE740CAB \$10,900

B | 19XEL740CAB \$12,100

48"H x 43"W x 20"D | 40 Lights

C | 19XE7120CAB \$28,810

C | 19XEL7120CAB \$33,600

51"H x 107"W x 24"D | 120 Lights

D | 19XE750CAB \$12,400

D | 19XEL750CAB \$14,150

51"H x 43"W x 24"D | 50 Lights

E | 19XE7104CAB \$28,760

E | 19XEL7104CAB \$33,100

51"H x 102"W x 24"D | 104 Lights
16" square area for statue

F | 19XE736CAB \$10,250

F | 19XEL736CAB \$12,250

57"H x 53"W x 28"D | 50 Lights

G | 19XE40CAB \$10,600

G | 19XEL40CAB \$12,000

43"H x 31"W x 16"D | 40 Lights

Solid Brass Crosses are sold separately
in sets of 5 for \$775.00 per set.



A



B



C



D



E



F



G

OAK CABINET ELECTRONIC STANDS

Hand Crafted Ecclesiastical Furnishings



A



B



C



D



E



F

A | 19XE784TB \$19,920

A | 419XEL784TB \$25,990

57"H x 95"W x 38"D | 84 Lights

16" square area for statue

B | 19XE7120TB \$25,050

B | 19XEL7120TB \$29,860

51"H x 107"W x 24"D | 120 Lights

C | 19XE750TB \$11,900

C | 19XEL750TB \$13,600

51"H x 43"W x 24"D | 50 Lights

D | 19XE736TB \$10,700

D | 19XEL736TB \$11,900

57"H x 53"W x 28"D | 36 Lights

E | 19XE40TB \$9,600

E | 19XEL40TB \$11,000

43"H x 31"W x 16"D | 40 Lights

F | 19XE7104TB \$25,700

F | 19XEL7104TB \$28,800

51"H x 107"W x 24"D | 104 Lights

16" square area for statue

19XE740TB \$9,900

19XEL740TB (NOT PICTURED) \$11,250

48"H x 43"W x 20"D | 40 Lights

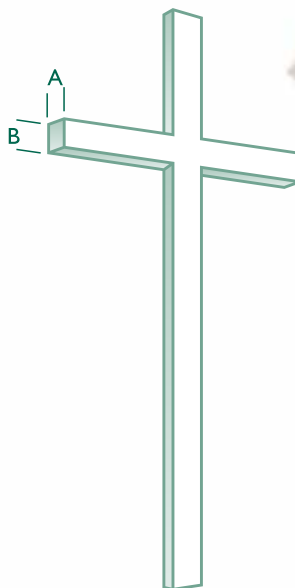
At your request, devotional Votive Stands can be designed and engineered to fit any area in your church. PEP Industries' craftsmen and trained staff will coordinate your special needs.

(E) denotes electric, (EL) denotes electronic (5 day, 8 hour, or 2 hour timers available).

All components meet national electric codes and UL safety requirements. The flicker flame candle bulb is used to simulate candle light, eliminating open flames. Shown in antique cherry finish.

CUSTOM CROSSES

Fabricated to compliment interior or exterior settings



CUSTOM MADE ALUMINUM CROSSES*

Overall Height	A 2"	B 4"	A 2"	B 6"	A 3"	B 3"	A 4"	B 4"
4'	\$2,630	\$2,740	\$2,630	\$2,740				
6'	\$3,245	\$3,490	\$3,245	\$3,490				
8'	\$3,675	\$4,290	\$3,675	\$4,290				
10'	\$4,210	\$4,865	\$4,210	\$4,865				

Crosses can be fabricated to specifications in wood or metal for everlasting beauty.

Handtooled in every detail and finish with epoxy coating. Every unit can be designed in traditional or contemporary styles to meet your architectural expression.

*Bracketing prices not included



REFINISHING

Hand Crafted Ecclesiastical Furnishings

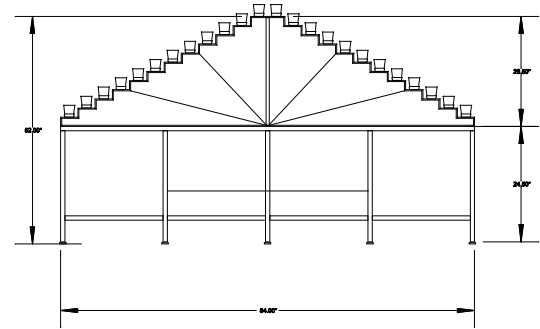


Refinishing and restoration of existing metal church appointments.

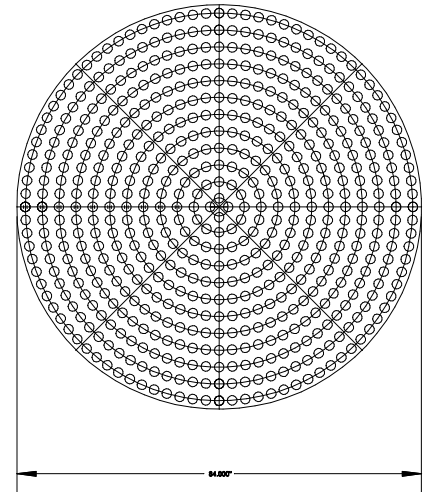
**WE CAN HELP CREATE
DEVOTIONAL AREAS.**



GROTTO OF OUR LADY OF LOURDES,
NOTRE DAME, INDIANA



**CIRCLE CANDLE STAND
10 ROWS OF 576 LIGHTS**



CUSTOM DESIGNS

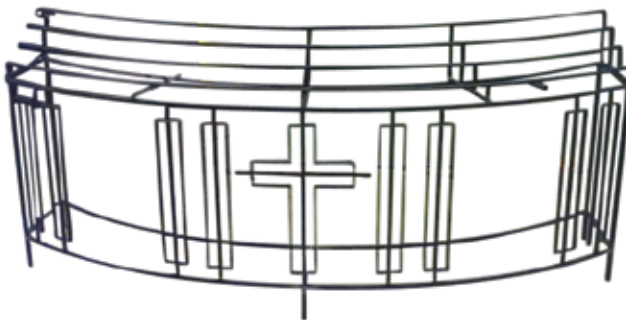
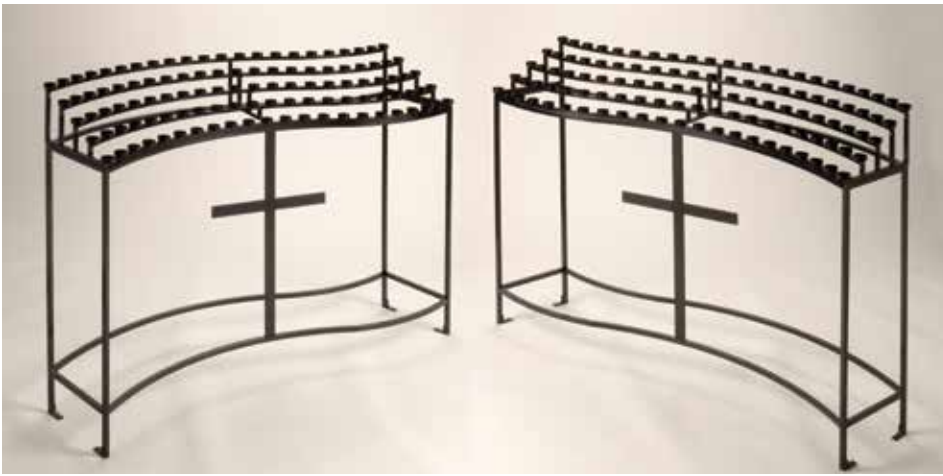


26"



6 ft.

Product Images not shown to scale

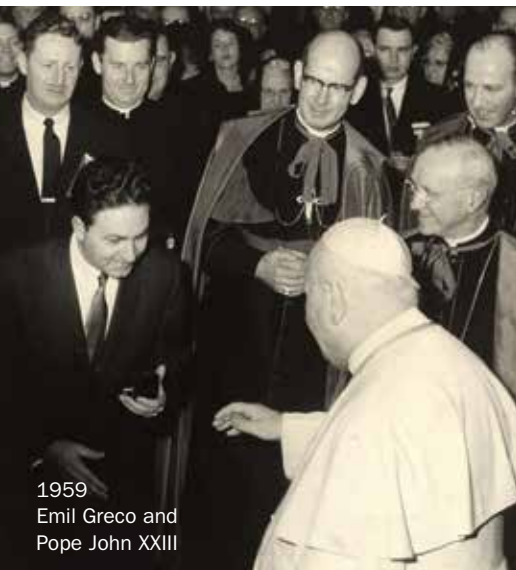


SYMBOLS | PLAQUES | MID CENTURY ART

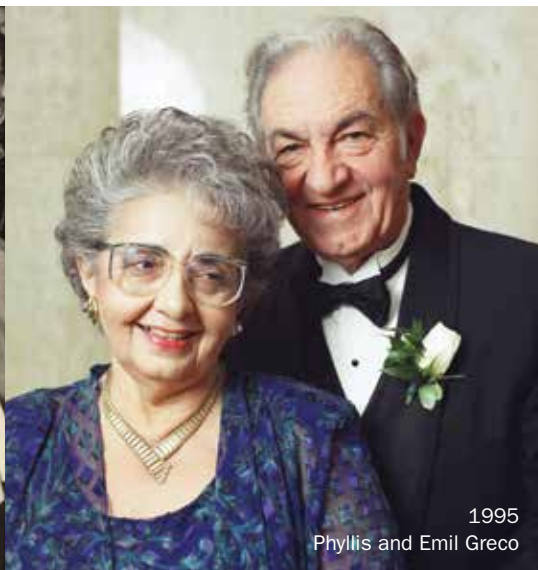


CUSTOM DESIGNS

HISTORY



1959
Emil Greco and
Pope John XXIII



1995
Phyllis and Emil Greco



1959
Emil and Phyllis Greco and Cardinal Meyer

GRECO MFG. CO. — PEP INDUSTRIES,
a fabricator of modern metal
ecclesiastical designs and furnishings,
began as a vision of Emil Greco.
Since its inception in 1945, the family
business has evolved to the current
industry standard it is today.

Emil Greco, the founder and visionary responsible for the business, was born in 1920 in Merano Marchesato, a small Calabrian town in the Province of Cosenza, Italy. After World War I, unemployment, lack of health care, and a poor educational system forced many area residents to look for work elsewhere, often abroad. Nine-year old Emil and his mother were among those heading across the Atlantic on the Conte Biancamano, passing through Ellis Island, and settling in Chicago.

Emil flourished in Chicago, indulging in his artistic interests, and eventually attending courses at the Art Institute of Chicago and the Fine Arts Academy. He cultivated his passion for art with love and commitment, and that passion set the course for the remainder of his life. With the outbreak of World War II, Emil was chosen for training in the Military Intelligence Department and joined the Twenty-Ninth Infantry Division for the landing on Omaha Beach in France on D-Day.

On his return from war in 1945, Emil helped his family sell miniature model airplane parts at their hobby store. He fell in love with Phyllis Savaglio and they married in 1950. For Emil, Phyllis would be not only a loving companion for life, but also an irreplaceable partner in his unique endeavors, a valued collaborator, and a constant stimulus for his creative energy. She helped him develop the business known as GRECO MFG. CO.

With his fabricating vision, Emil began to design unique communion railings of marble, bronze, and other metals for Catholic churches, a tremendous area of opportunity. He prospered and soon was able construct a 10,000 square foot factory. Emil and GRECO soon became known for innovative ecclesiastical interior design, focusing on metal and wood interior furnishings during the mid 1960s.

With the Vatican Council II convening during that same time period, new directions in liturgical theology and furnishings were introduced. With their reputation for excellence, Emil and his company were appointed by the Liturgical Commission of the United States to teach architects working in this sector how to apply the new requirements contained in liturgical reform.

Emil became friends with many figures holding high ecclesiastical office, first among them Pope John XXIII, who bestowed on him the nickname “the Calabrian friend of His Holiness.” During frequent trips to Italy, Emil never failed to bring gifts for the Vatican prelates, coining medals for them: a gold one for the Pope and bronze ones for bishops and cardinals.

Over time, Emil’s company designed, fabricated, and installed interiors of hundreds of churches, including St. Peter’s in the heart of Chicago; the Cathedral in Phoenix, Arizona; St. Mary’s in the mountains of California; and others from Miami Beach to San Francisco to New York. While remaining within the framework of an ancient art, GRECO brought about changes in style, wisely fusing contemporary ideas with tradition. The factory grew to 130,000 square feet and employed up to 95 collaborators, including architects, sculptors, artists, woodworkers, glaziers, and many others.

From the 1970s until today, the wax candle stand and shrine have been GRECO’s most famous products, with GRECO introducing the first UL-approved electric candle votive stands and distributing its new articles throughout the United States and Canada. Progress in metal technology permitted GRECO MFG. CO. to create exclusive and original contemporary furnishings using bronze and stainless steel, as well as burnt bronze technique, molds using polyurethane, and Verson press fabrication by oil pressure technique.

Never content to stay only with ecclesiastical furnishings, Emil and Phyllis branched out into other areas, distributing Beringer Brothers alter wine; starting their own bank; owning a semi-professional hockey franchise; and purchasing and developing hundreds of acres of real estate, including a mountain and gold mine in Montana. One of their greatest accomplishments was the design and construction of a sports complex to keep “kids off the street.” As it’s known today, THE ODEUM SPORTS AND EXPO CENTER hosts a variety of special events including concerts, indoor soccer, corporate events, and public tradeshow. Each year, over two million visitors pass through THE ODEUM doors.

GRECO MFG. evolved into PEP INDUSTRIES in the early 1980s and today flourishes with the continued courses that Emil and Phyllis established. PEP Industries is now spearheaded by Bruce Campbell (son-in-law) since 1992. He continues the quality of excellence in customer satisfaction, and the business values of Emil and Phyllis Greco. PEP today is a diversified, state-of-the-art metal fabricating facility. PEP-GRECO continues to produce special, “one of a kind” products. Designs by GRECO will live on through PEP INDUSTRIES for many years to come!

Emil and Phyllis together built their success with commitment and dedication, giving a valuable lesson in life to us all, especially their four children, Patrick, Francine, Philip, and Renee. Emil Greco left us in 1996, husband, father, and best friend: a man who taught all of us the true meaning of love, family, friendship, and life.





725 N. Wisconsin | Villa Park, IL 60181
630.833.0404 | Fax 630.833.7709 | pepindustries.com
2025-2026



DESIGNS BY GRECO